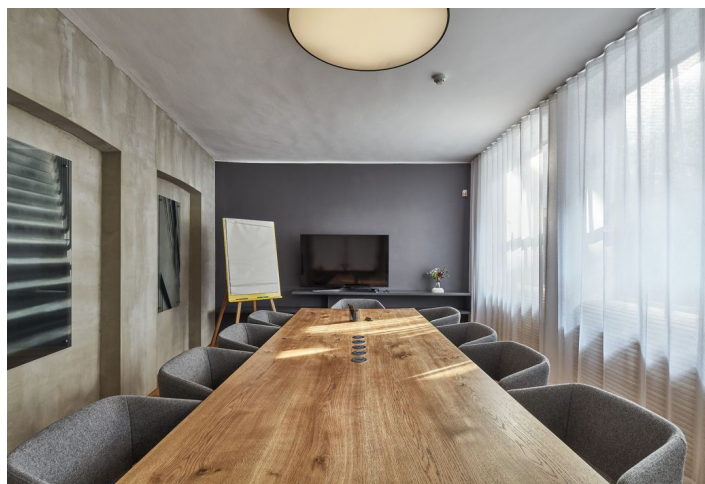
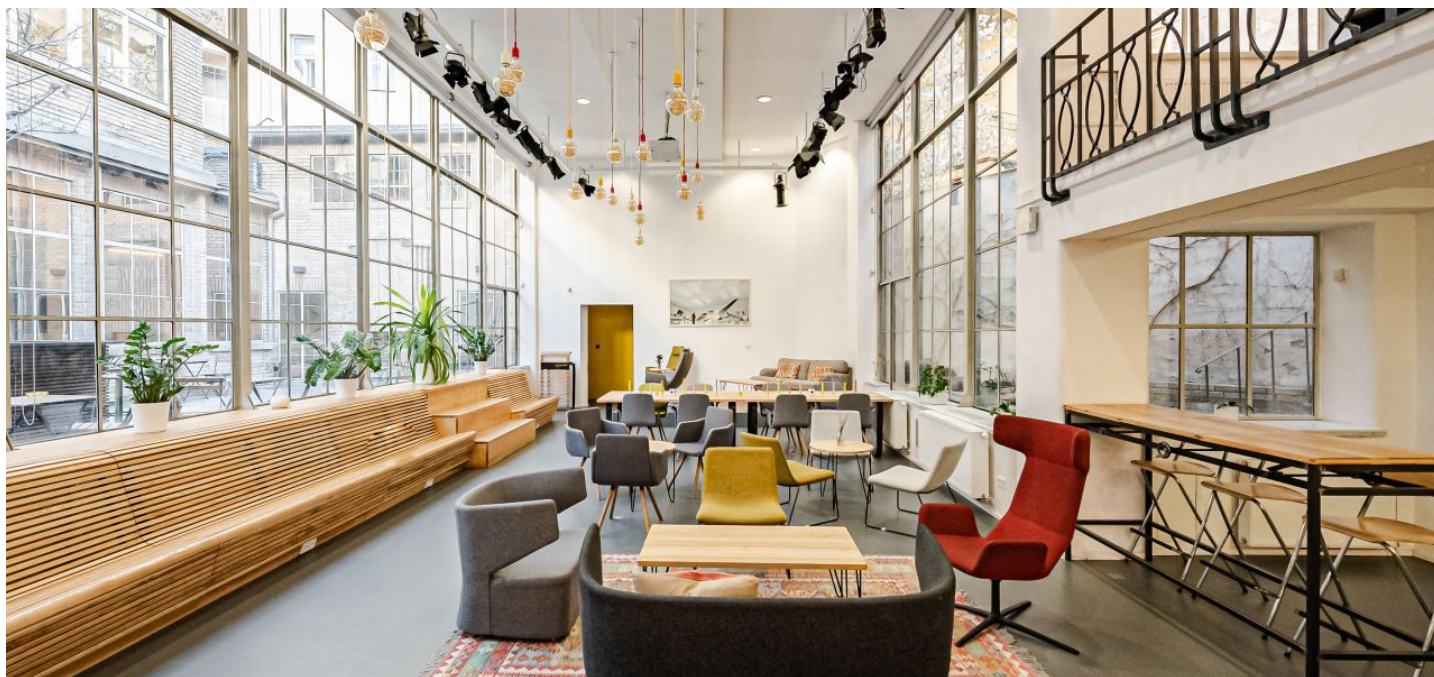




## Office building

138 m², Prague 1, Staré Město, Salvátorská

Ask for price



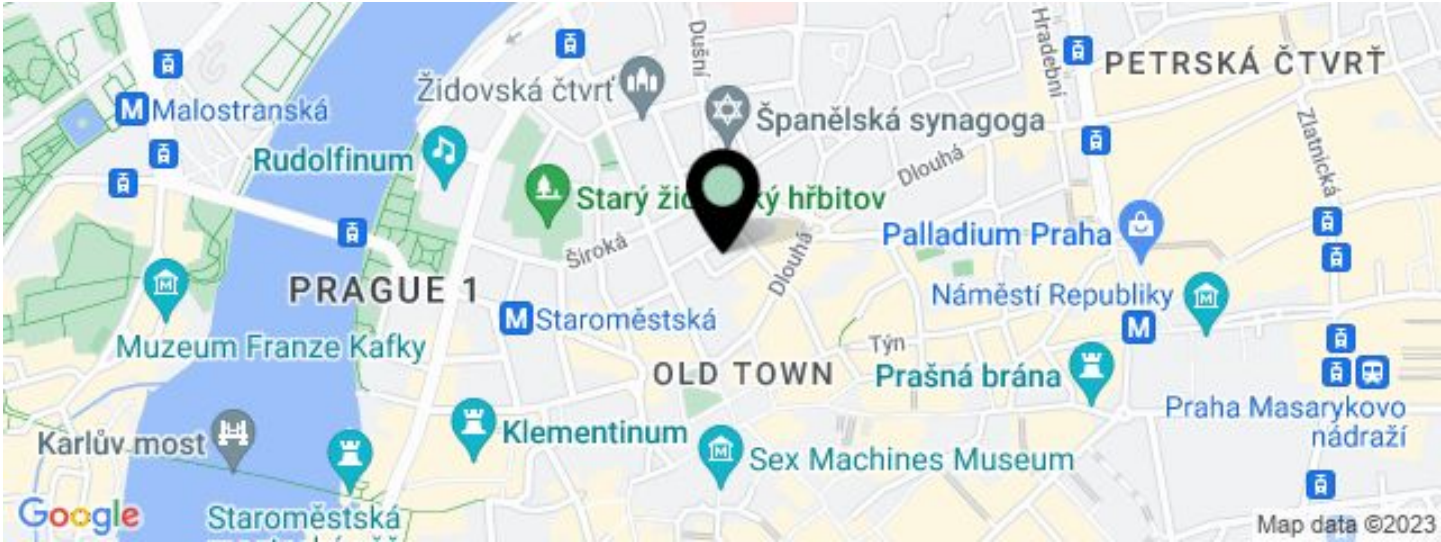




Office building

Ask for price

138 m², Prague 1, Staré Město, Salvátorská



UNIT	AVAILABLE AREA	SERVICES	PARKING	MONTHLY RENT
private office	28 m²	not included	No	€ 68.51 / m²
dedicated desk	15 - 500 m²	not included	No	Ask for price
coworking	15 - 500 m²	not included	No	Ask for price
business club	100 - 500 m²	not included	No	Ask for price



## Office building

138 m², Prague 1, Staré Město, Salvátorská

[Ask for price](#)

Total building area	500 m²
Tenant consumption	—
Parking	-
Parking service charges	—
Parking ratio	—
Certification	—
PENB	G
Reference number	35674

**Membership in this business center will provide you with an elegant workspace and place for meetings. Located in the sensitively renovated premises of an exceptional historical building in the center of Prague, you will find everything you need for you and your guests.**

The business center allows you to choose either a fully equipped private office, your own desk, a monthly flexible coworking membership, or an annual club membership.

Private offices are an ideal space for teams because they can also use the shared areas of the center. Individuals will appreciate their own work space, the flexibility of the coworking area, or can use their club membership during occasional visits to the center of Prague.

For their educational program, the business center focuses on current topics and trends that affect our professional and personal lives. In our modern context and together with you, the business center tries to understand and influence what will happen in economics, business, science, technology, and politics.

The premises are located in a historic building from 1909, one of the first Modernist style building in Europe. The building was previously used as the printing and graphic studio of Jan Štenc. In 1995, it was completely refurbished and sensitively renovated.

### Location:

The premises are located in the center of Prague near Old Town Square, within walking distance of the **Staroměstská (line A)** metro station and tram stop, the **Můstek (line A and B)** metro station, or the Dlouhá třída tram stop. Letná is a 15-minute walk away and you can reach the **Náměstí republiky metro station (line B)**, where the Palladium and Kotva shopping malls are located, on foot within 10 minutes. The neighborhood is full of high-quality restaurants and cafes, shops, and cultural venues. It is possible to provide parking in the private blue zones of Prague 1.

### Shared office facilities and services:

Reception with a professional concierge  
 Making it the company's registered office  
 Private cafe for members and their guests  
 5 types of meeting rooms  
 Outdoor terraces for work and relaxation, hidden corners  
 Educational, social, and networking events  
 High-speed internet  
 Printing and copying  
 Ensuring mail and postal services  
 Assistant and administrative services



Office building

138 m², Prague 1, Staré Město, Salvátorská

Ask for price

Total building area	500 m²
Tenant consumption	—
Parking	-
Parking service charges	—
Parking ratio	—
Certification	—
PENB	G
Reference number	35674

- Parking options
- Chip card access
- Call boxes
- Kitchenette

The price list including services:

- Coworking:**
- Flexible month membership ..... from CZK 2,500/month
  - Annual club membership ..... from CZK 18,000/year
  - Fixed desk ..... CZK 7,500/month

- Private offices:**
- Office 28 sq. m. .... from CZK 45,000/month

Lease and service charges listed without VAT. Lessee pays no commission.



## Office building

138 m<sup>2</sup>, Prague 1, Staré Město, Salvátorská

Ask for price

