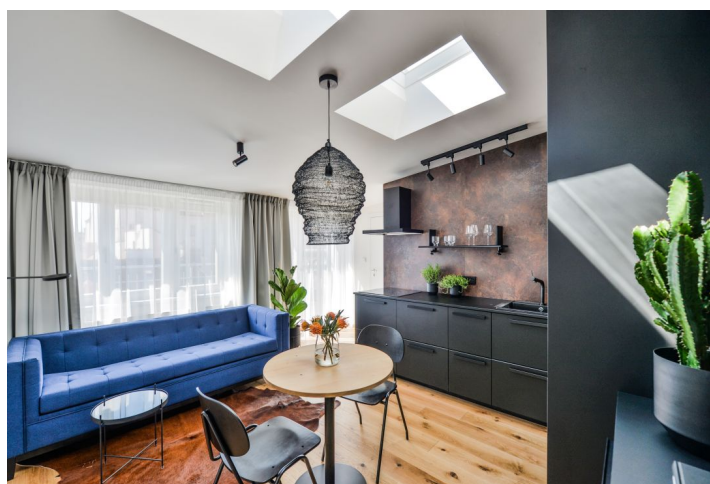




## Apartment One-bedroom (2+kk)

€ 1 093 | CZK 27 000

43 m², Prague 7, Holešovice, Heřmanova





## Apartment One-bedroom (2+kk)

€ 1 093 | CZK 27 000

43 m<sup>2</sup>, Prague 7, Holešovice, Heřmanova

Total area	57 m <sup>2</sup>
Floor area*	43 m <sup>2</sup>
Terrace	14 m <sup>2</sup>
Parking	-
Cellar	Yes

Service price	Service charges and water for one person CZK 2,000/month. Gas and electricity - transferred to the tenant.
---------------	--

PENB	C
------	---

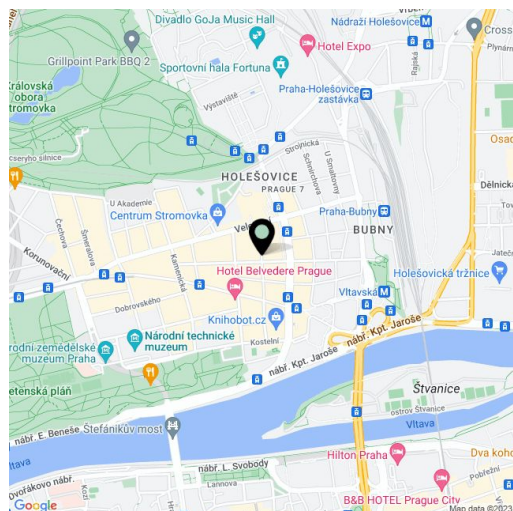
Reference number	32272
------------------	-------

Available from	01.07.2024
----------------	------------

Boasting a 14 m<sup>2</sup> south-facing terrace, this air-conditioned attic apartment, fully equipped with design furniture, is set on the 5th top floor of a completely refurbished residential building with a new elevator and preserved original details. Nicely located within walking distance of two popular Prague parks - Stromovka and Letná. A trendy area with full amenities, numerous restaurants, bistros and cafes, a two min. walk from a tram stop with quick connections to the city center and Hradčanská and Vltavská metro stations. A highly sought-after location within easy reach of the airport and international schools in Prague 6.

The interior features an air-conditioned living room with a fully fitted open plan kitchen, dining area, and access to the **terrace** facing the quiet green back yard, and one bedroom with ample built-in wardrobes and storage. There is a bathroom including a walk-in shower and a toilet, and an entrance hall with more built-in wardrobes.

**Hardwood floors**, decorative tiles, security entry door, light tunnels, gas boiler, washer, dryer, dishwasher, microwave oven, sofa bed, garden furniture, **cellar**.



\* Size of the unit according to the Housing Act.  
The area consists of the sum total of the internal area of every room.