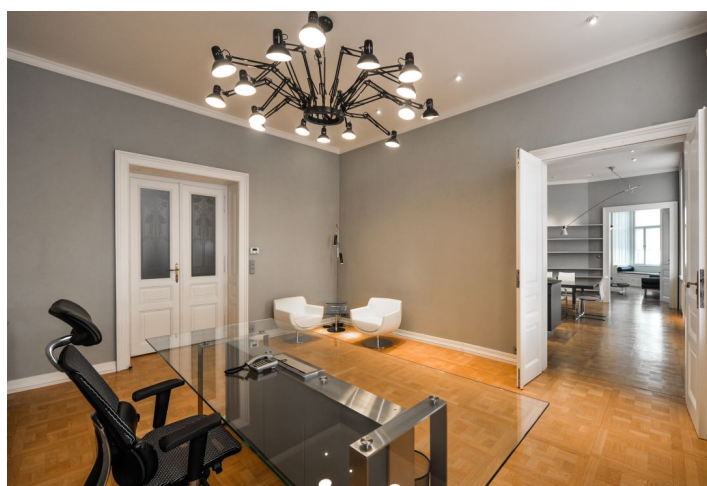
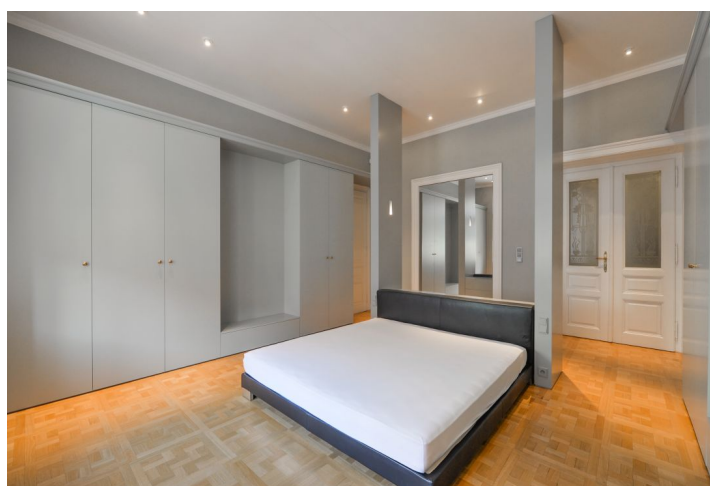




Apartment Two-bedroom (3+1)

€ 2 388 | CZK 59 000

150 m², Prague 1, Staré Město, Dlouhá





Apartment Two-bedroom (3+1)

€ 2 388 | CZK 59 000

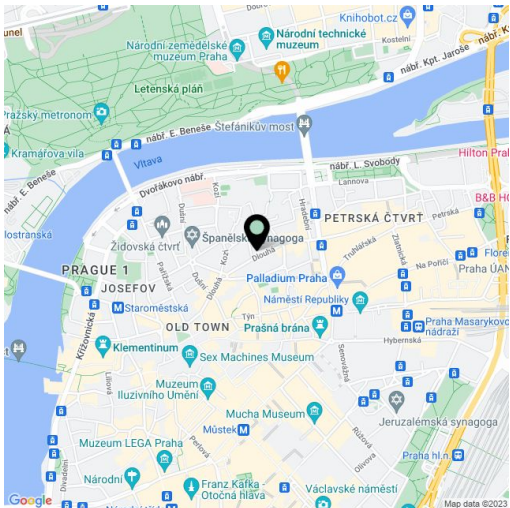
150 m², Prague 1, Staré Město, Dlouhá

Total area	150 m²
Parking	-
Cellar	-
Service price	Deposit for building charges, water, and security CZK 1,000/person/month. Gas and electricity - transferred to the tenant.
PENB	G
Reference number	28899
Available from	Immediately

This fully modernized, fully furnished, designer "managerial" apartment is situated on the 2nd floor of a completely renovated building with an elevator. Conveniently located in Prague's city center, minutes from Old Town Square, luxurious Pařížská Street, and the Náměstí Republiky metro station, with excellent shopping and entertainment opportunities. A prestigious address surrounded by a top selection of restaurants, cafes, delis, boutiques, and other services, within walking distance of the Vltava riverbank and Letná Park.

With airy rooms, the interior features a corner living room, a fully fitted kitchen with a dining area, one bedroom with ample built-in wardrobes, a spacious office, a full bathroom with a window, a guest toilet with a pissoir, and an entrance hall with built-in storage.

Premium equipment and finishes, preserved original details, high ceilings, large windows, **hardwood parquet floors**, tiles, built-in storage, roller blinds, gas boiler, De Dietrich kitchen appliances, alarm, video entry phone, chip entry to the building.



* Area of the unit according to the Civil Code. The area consists of the sum total area of the entire unit bounded by perimeter walls.