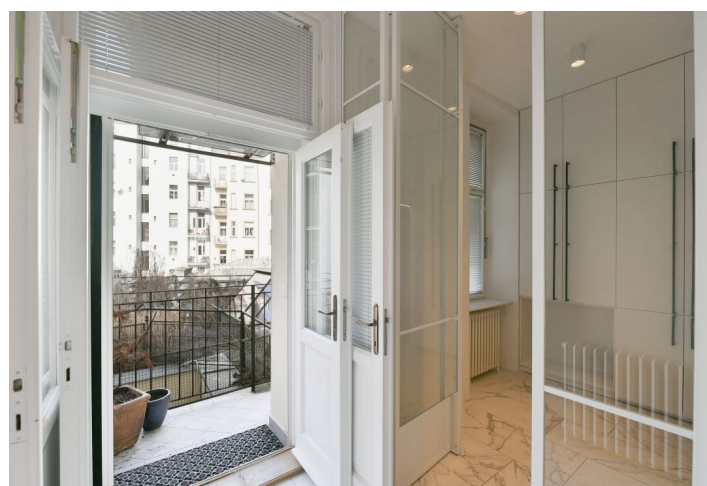
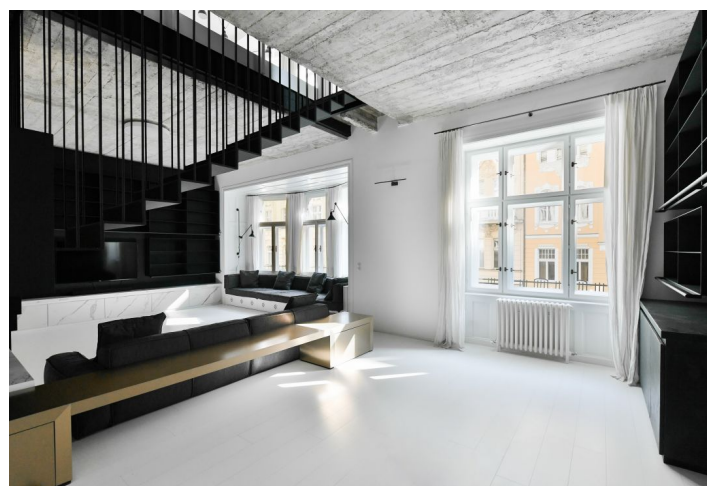




Apartment Four-bedroom (5+1)

Ask for price

241 m², Prague 1, Staré Město, Věžeňská





Apartment Four-bedroom (5+1)

[Ask for price](#)241 m², Prague 1, Staré Město, Věžeňská

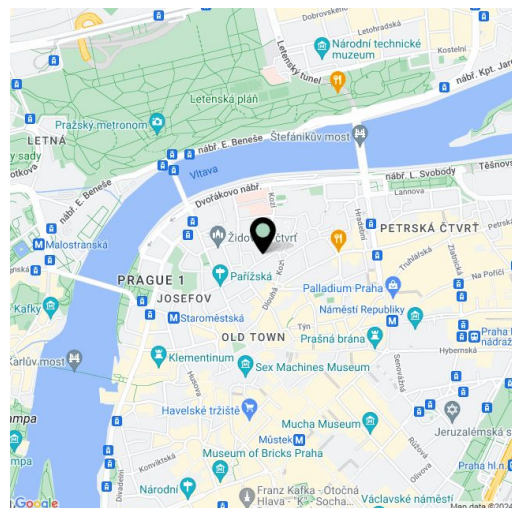
| | |
|------------------|-------------------------|
| Total area | 263 m ² |
| Floor area* | 241 m ² |
| Balcony | 2 m ² |
| Terrace | 20 m ² |
| Parking | 2 garage parking spaces |
| Garage | Yes |
| Cellar | - |
| Reference number | 104282 |

This designer furnished, air-conditioned apartment, which, thanks to its size of over 200 m² and the type of facilities, can be compared to luxury apartments in the world's capital cities, is spread out over two floors of a wonderful building that stands in the center of Prague, in the magical Haštalská district in Old Town. Two garage parking spaces and a 24/7 reception in the building contribute to residents' comfort and safety.

On the entrance level of the apartment (1st floor of the building) is a living room, 1 bedroom, a bathroom, a separate toilet, a cleaning/laundry room, and an entrance hall with access to a **terrace with ornamental plants**. On the upper level, accessible by stairs from the living room, is a kitchen with a dining area, a bedroom with a **balcony and walk-in wardrobe**, another 2 bedrooms, and a bathroom (shower, bathtub, toilet, sink). It is possible to take the **elevator** to the 1st and 2nd floors. On the upper floor is a practical pantry right by the entrance to the apartment, so you won't have to carry your shopping upstairs. There is a **preparation for a kitchen** behind the built-in bookcase **in the living room**, making it possible to reinstall the kitchen there. Both the terrace and the balcony face northwest towards the **courtyard**.

The apartment, created by joining two units, was renovated and furnished in 2018 according to the designs of a **renowned architectural studio**. The entire apartment has tiled floors with **underfloor heating** and **Soliter Parquet wooden floors** in white, **air-conditioning** throughout, and gas boiler heating can be controlled remotely via a mobile phone. The **stone-tiled kitchen** is equipped with built-in Siemens appliances, the elegant bathrooms have brand name sanitary ware and faucets. The feeling of freedom is enhanced by ceilings with a height of 3.4 m and interior doors of 2.4 m. Plenty of daylight is let in by large **casement windows**, replicas of the original ones, which were inserted into **arched southeast-facing bay windows** in the living room and kitchen. The purchase price includes **2 parking spaces** in the **garage** accessible by a car elevator. The building is maintained, and a **24/7 reception** is available to residents.

An excellent location on a one-way side street near the well-maintained **Kozi Plácek Square** and close to elegant **Pařížská Street**, offering a wide selection of restaurants and cafes, plenty of shops, medical services, but also **theaters, galleries**, and schools from kindergartens, elementary schools, a high school, and the **Charles University**. Excellent transport connections are provided by trams and buses from nearby stops, and the Staroměstská metro station is about a 5-minute walk away.

Floor area 241.3 m², balcony 2.10 m², terrace

* Size of the unit according to the Housing Act.
The area consists of the sum total of the internal area of every room.



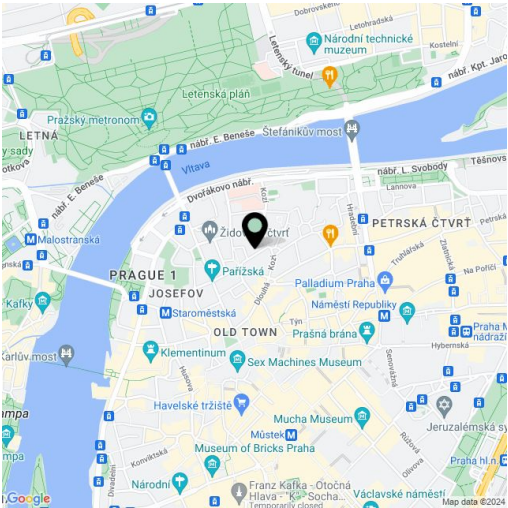
Apartment Four-bedroom (5+1)

Ask for price

241 m², Prague 1, Staré Město, Věžeňská

| | |
|------------------|-------------------------|
| Total area | 263 m² |
| Floor area* | 241 m² |
| Balcony | 2 m² |
| Terrace | 20 m² |
| Parking | 2 garage parking spaces |
| Garage | Yes |
| Cellar | - |
| Reference number | 104282 |

approx. 20 m² (for the exclusive use of the unit's owner).



* Size of the unit according to the Housing Act.
The area consists of the sum total of the internal
area of every room.



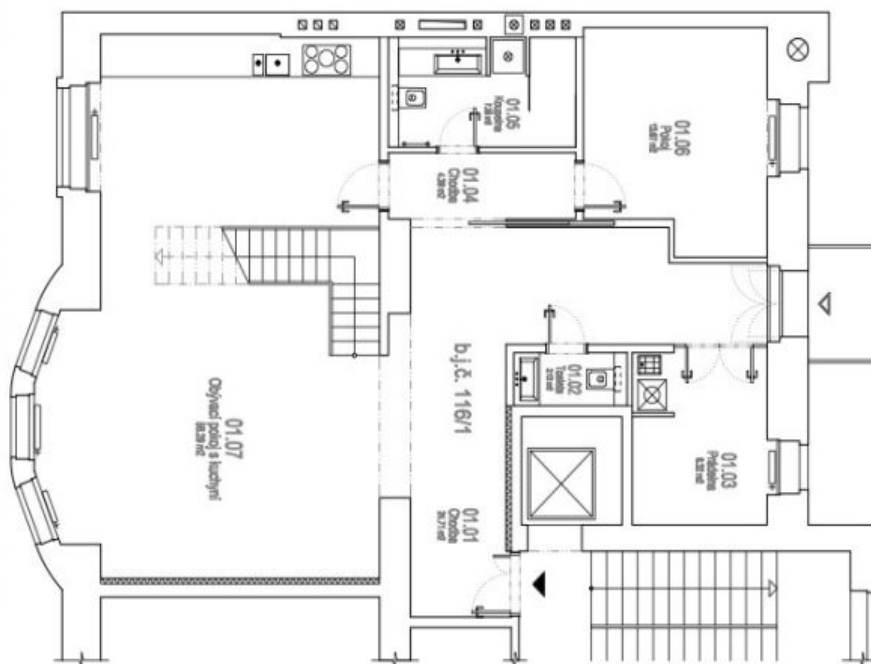
Apartment Four-bedroom (5+1)

Ask for price

241 m², Prague 1, Staré Město, Věžeňská

Legenda místností

| Číslo | Užití místnosti | Plocha m ² |
|-------|------------------------|-----------------------|
| 01.01 | Chodba | 3,71 m ² |
| 01.02 | Kuchyň | 10,78 m ² |
| 01.03 | Pokoj | 14,28 m ² |
| 01.04 | Pokoj | 14,28 m ² |
| 01.05 | Pokoj | 14,28 m ² |
| 01.06 | Pokoj | 14,28 m ² |
| 01.07 | Obývací pokoj a kuchyň | 37,71 m ² |
| 01.08 | Koupelna | 7,29 m ² |
| 01.09 | WC | 1,82 m ² |
| 01.10 | WC | 1,82 m ² |
| 01.11 | WC | 1,82 m ² |
| 01.12 | WC | 1,82 m ² |
| 01.13 | WC | 1,82 m ² |
| 01.14 | WC | 1,82 m ² |
| 01.15 | WC | 1,82 m ² |
| 01.16 | WC | 1,82 m ² |
| 01.17 | WC | 1,82 m ² |
| 01.18 | WC | 1,82 m ² |
| 01.19 | WC | 1,82 m ² |
| 01.20 | WC | 1,82 m ² |
| 01.21 | WC | 1,82 m ² |
| 01.22 | WC | 1,82 m ² |
| 01.23 | WC | 1,82 m ² |
| 01.24 | WC | 1,82 m ² |
| 01.25 | WC | 1,82 m ² |
| 01.26 | WC | 1,82 m ² |
| 01.27 | WC | 1,82 m ² |
| 01.28 | WC | 1,82 m ² |
| 01.29 | WC | 1,82 m ² |
| 01.30 | WC | 1,82 m ² |
| 01.31 | WC | 1,82 m ² |
| 01.32 | WC | 1,82 m ² |
| 01.33 | WC | 1,82 m ² |
| 01.34 | WC | 1,82 m ² |
| 01.35 | WC | 1,82 m ² |
| 01.36 | WC | 1,82 m ² |
| 01.37 | WC | 1,82 m ² |
| 01.38 | WC | 1,82 m ² |
| 01.39 | WC | 1,82 m ² |
| 01.40 | WC | 1,82 m ² |
| 01.41 | WC | 1,82 m ² |
| 01.42 | WC | 1,82 m ² |
| 01.43 | WC | 1,82 m ² |
| 01.44 | WC | 1,82 m ² |
| 01.45 | WC | 1,82 m ² |
| 01.46 | WC | 1,82 m ² |
| 01.47 | WC | 1,82 m ² |
| 01.48 | WC | 1,82 m ² |
| 01.49 | WC | 1,82 m ² |
| 01.50 | WC | 1,82 m ² |



Legenda místností

| Číslo | Užití místnosti | Plocha m ² |
|-------|------------------------|-----------------------|
| 02.01 | Chodba | 3,71 m ² |
| 02.02 | Kuchyň | 10,78 m ² |
| 02.03 | Pokoj | 14,28 m ² |
| 02.04 | Pokoj | 14,28 m ² |
| 02.05 | Pokoj | 14,28 m ² |
| 02.06 | Pokoj | 14,28 m ² |
| 02.07 | Obývací pokoj a kuchyň | 37,71 m ² |
| 02.08 | Koupelna | 7,29 m ² |
| 02.09 | WC | 1,82 m ² |
| 02.10 | WC | 1,82 m ² |
| 02.11 | WC | 1,82 m ² |
| 02.12 | WC | 1,82 m ² |
| 02.13 | WC | 1,82 m ² |
| 02.14 | WC | 1,82 m ² |
| 02.15 | WC | 1,82 m ² |
| 02.16 | WC | 1,82 m ² |
| 02.17 | WC | 1,82 m ² |
| 02.18 | WC | 1,82 m ² |
| 02.19 | WC | 1,82 m ² |
| 02.20 | WC | 1,82 m ² |
| 02.21 | WC | 1,82 m ² |
| 02.22 | WC | 1,82 m ² |
| 02.23 | WC | 1,82 m ² |
| 02.24 | WC | 1,82 m ² |
| 02.25 | WC | 1,82 m ² |
| 02.26 | WC | 1,82 m ² |
| 02.27 | WC | 1,82 m ² |
| 02.28 | WC | 1,82 m ² |
| 02.29 | WC | 1,82 m ² |
| 02.30 | WC | 1,82 m ² |
| 02.31 | WC | 1,82 m ² |
| 02.32 | WC | 1,82 m ² |
| 02.33 | WC | 1,82 m ² |
| 02.34 | WC | 1,82 m ² |
| 02.35 | WC | 1,82 m ² |
| 02.36 | WC | 1,82 m ² |
| 02.37 | WC | 1,82 m ² |
| 02.38 | WC | 1,82 m ² |
| 02.39 | WC | 1,82 m ² |
| 02.40 | WC | 1,82 m ² |
| 02.41 | WC | 1,82 m ² |
| 02.42 | WC | 1,82 m ² |
| 02.43 | WC | 1,82 m ² |
| 02.44 | WC | 1,82 m ² |
| 02.45 | WC | 1,82 m ² |
| 02.46 | WC | 1,82 m ² |
| 02.47 | WC | 1,82 m ² |
| 02.48 | WC | 1,82 m ² |
| 02.49 | WC | 1,82 m ² |
| 02.50 | WC | 1,82 m ² |

