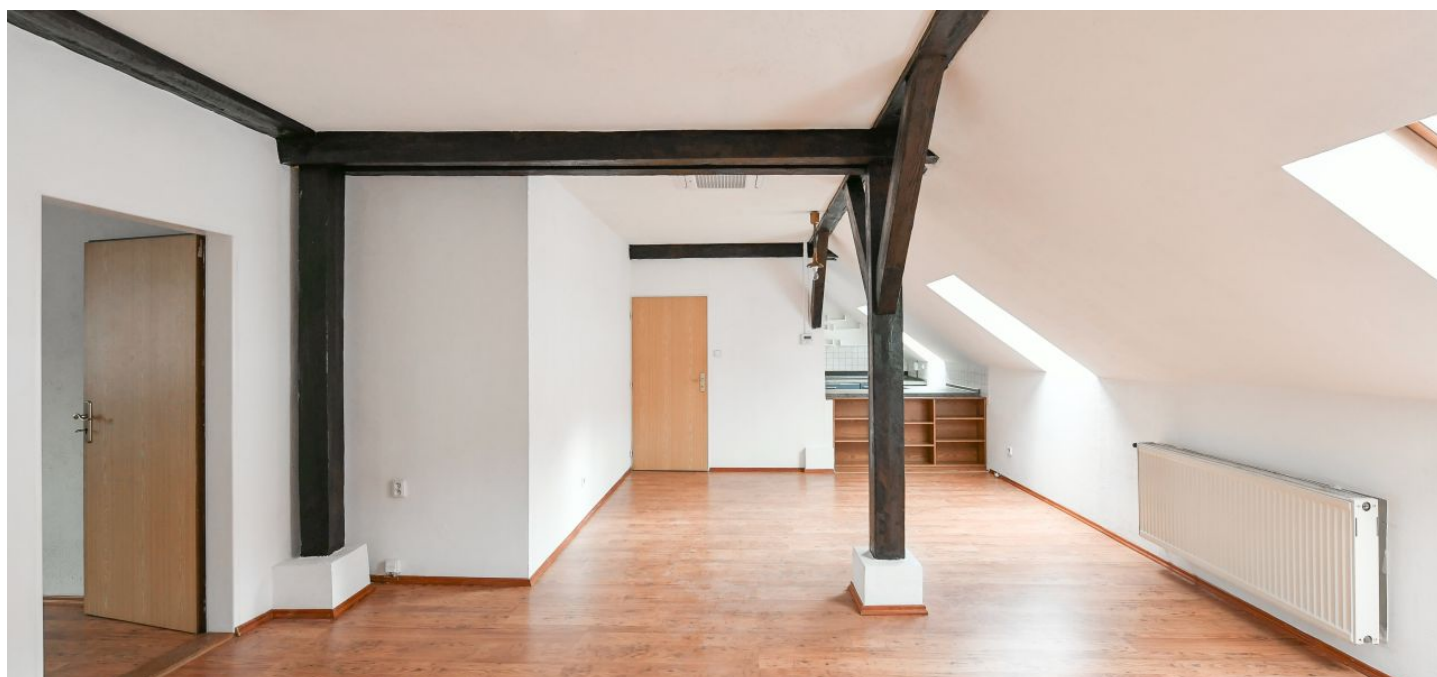




## Apartment One-bedroom (2+kk)

€ 1 012 | CZK 25 000

70 m², Prague 5, Smíchov, Jindřicha Plachty





# Apartment One-bedroom (2+kk)

€ 1 012 | CZK 25 000

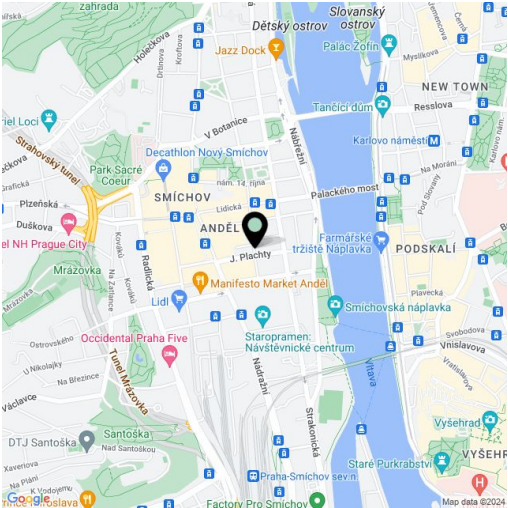
70 m², Prague 5, Smíchov, Jindřicha Plachty

Total area	70 m²
Parking	Garage parking in the opposite building.
Garage	Yes
Cellar	Yes
Service price	Monthly deposit for services and water: CZK 1,500. Electricity and gas are billed separately (transferred to the tenant).
Reference number	104152
Available from	Immediately

This unfurnished attic apartment with parking available in the building across the street is situated on the 4th topmost floor of a well-maintained, renovated Art Nouveau building with an elevator. Located on a quiet street just moments from the Vltava riverbank, with quick access to the city center, and a short walk to the Nový Smíchov commercial and entertainment center, with multiple tram lines and the Anděl metro station (line B).

The interior features a living room with a dining area, a partially separated fully fitted kitchen, a bedroom facing a quiet courtyard, a bathroom (large walk-in shower, bidet, toilet), a storage room, and an entrance hall.

**Air-conditioning** in the living room and bedroom, laminate floors, tiles, gas boiler, washing machine, dishwasher, **cellar**. A **garage parking** space in the building opposite is available at an additional fee.



\* Size of the unit according to the Housing Act.  
The area consists of the sum total of the internal area of every room.