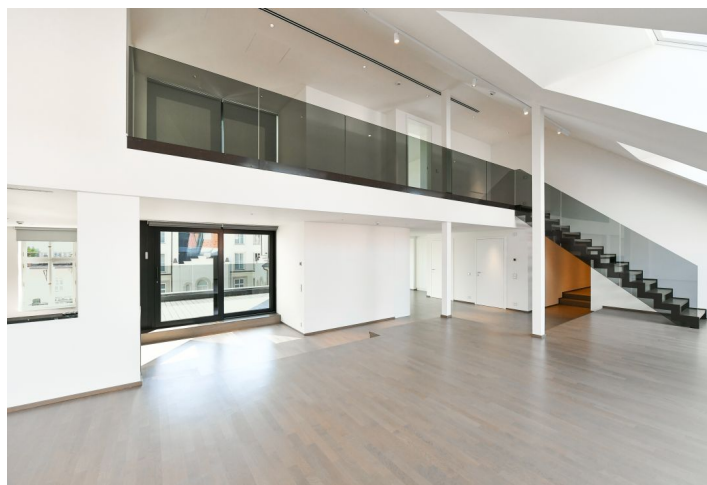
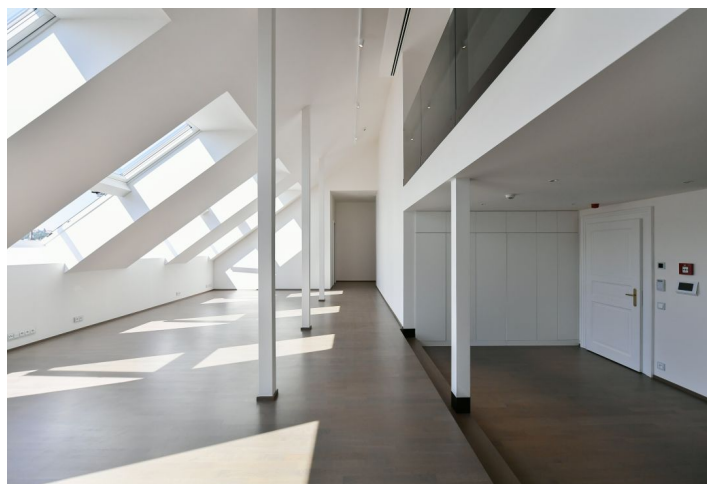




Apartment Seven-bedroom (8+kk)

Ask for price

510 m², Prague 5, Malá Strana, Zborovská





Apartment Seven-bedroom (8+kk)

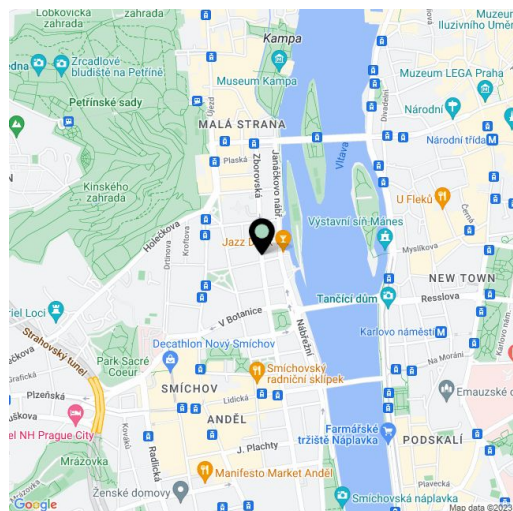
[Ask for price](#)510 m², Prague 5, Malá Strana, Zborovská

Total area	528 m ²
Floor area*	510 m ²
Terrace	18 m ²
Parking	On-site garage parking.
Garage	Yes
Cellar	-
Service price	Deposit for services and water CZK 98/m ² /month. Gas and electricity - transferred to the tenant.
PENB	A
Reference number	102634
Available from	Immediately

Exceptionally large attic apartment with parking. This spacious split-level apartment with a 18 sq .m. terrace and 5 bathrooms is on the 5th floor of a late 19th century apartment building that has been meticulously renovated, offering a 24/7 reception, security, a camera system, a swimming pool, a sauna, a gym, underground parking, an elevator, and a landscaped courtyard garden. Centrally located just steps from the Vltava riverbank, within walking distance of Kampa Island, Petřín Hill Park, Malá Strana (Lesser Town), and Old Town. The neighborhood has easy access to the Prague Castle, the Anděl commercial zone and metro station, and the French School.

The lower level features two living rooms with fully fitted open plan kitchens with a dining area, 3 bedrooms, 2 bathrooms, 2 additional separate toilets, **2 walk-in closets**, a utility room, and a spacious entrance hall with access to the terrace. The upper floor includes 3 bedrooms with en-suite bathrooms, a **walk-in closet**, and a gallery.

Smart home control and security system, quality equipment and finishes, **air-conditioning**, **oak floors**, large-format tiles, security entry door, built-in wardrobes, triple-glazed windows, remote-control atelier windows, blackout blinds, gas boiler, washer, dryer, **SieMatic** kitchen with **Miele** appliances, induction cooktop, dishwasher, microwave oven, video entry phone, WiFi, **cellar**, chip entry, charging station for electric cars. A **garage parking** space is available at CZK 10,000/month + VAT.



* Area of the unit according to the Civil Code. The area consists of the sum total area of the entire unit bounded by perimeter walls.